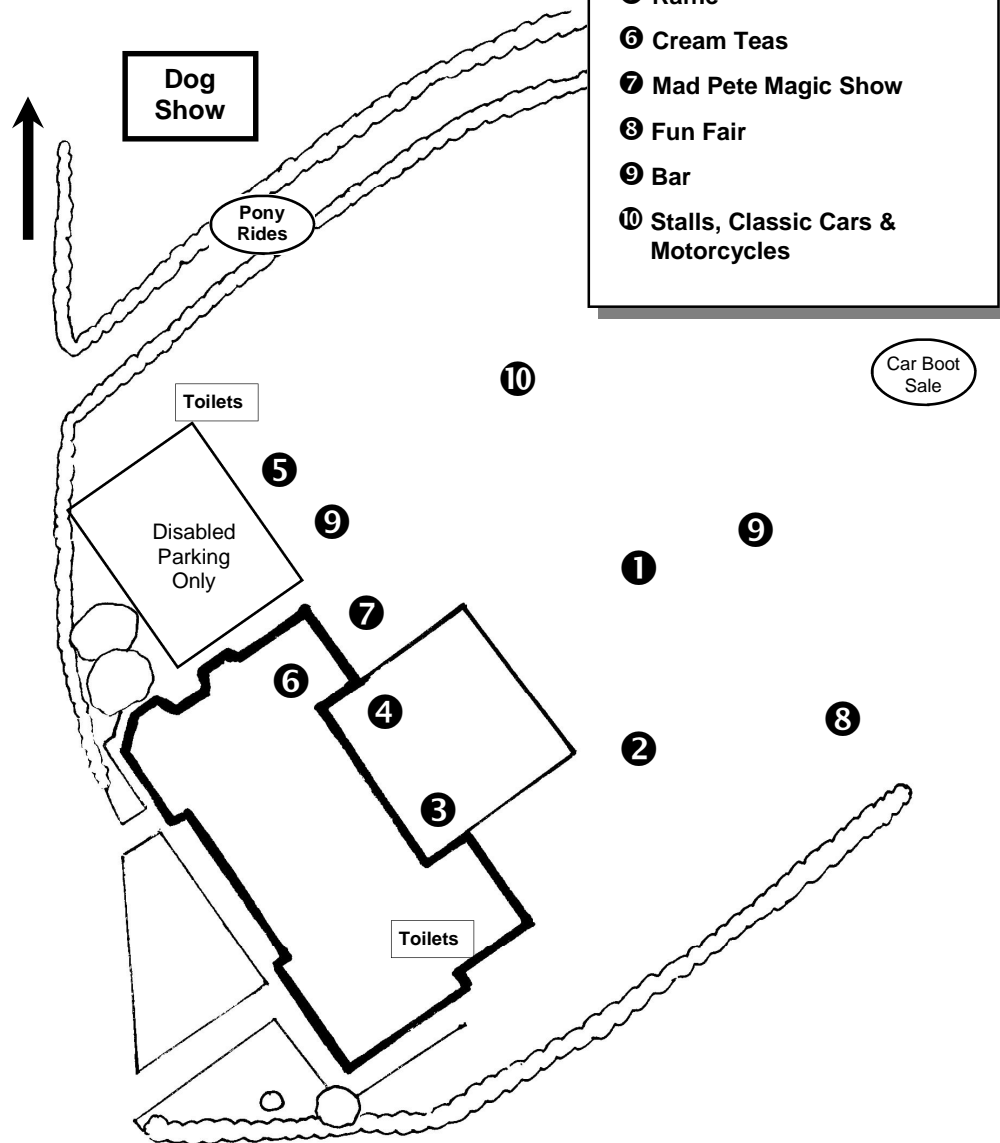


# Fete Layout



# FETE

## PROGRAMME

**SATURDAY 25TH AUGUST**

**1pm - 6pm**

**SHRIVENHAM MEMORIAL HALL  
& RECREATION GROUND**

**FREE ENTRY**

**PARKING AVAILABLE**



Featuring  
**'The Wyoming Raiders'**  
Wild West Re-enactment



# Barrington Arms Hotel

Are Hosting A Beer Tent At  
This Year's Fete

- REAL ALES
- LAGER
- CIDER
- WINES
- SOFT DRINKS
- PIMMS NO 1

*The Barrington Arms Hotel*  
25 High Street, Shrivenham, Oxon SN6 8AN  
(01793 784692)  
[www.barringtonarmshotel.com](http://www.barringtonarmshotel.com)

# Barrington Arms Hotel

**Bar, Restaurant & Hotel**

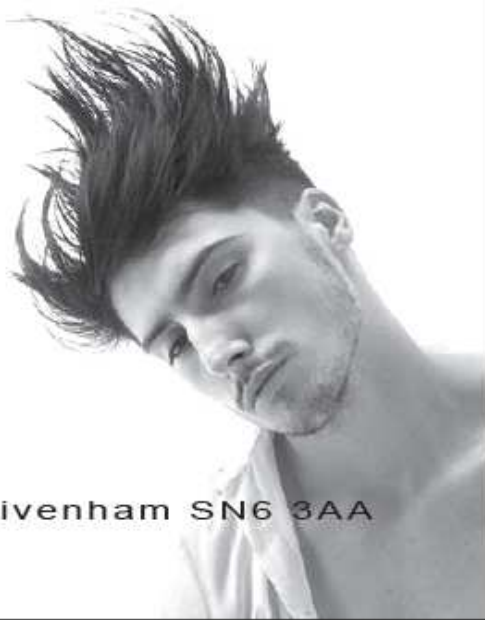
● **OPEN ALL DAY, EVERYDAY** ●

LUNCHTIME & EVENING MEALS  
TRADITIONAL SUNDAY CARVERY  
FROM 12 NOON

9 LUXURY DOUBLE ROOM  
£70 A NIGHT INCL. BREAKFAST  
EXCELLENT REAL ALES  
2 LARGE SCREEN TV'S FOR SPORTS VIEWING  
JUKEBOX POOL TABLE  
FREE WI-FI  
BEER GARDEN AND PATIO

*The Barrington Arms Hotel*  
25 High Street, Shrivenham, Oxon SN6 8AN  
(01793 784692)  
[www.barringtonarmshotel.com](http://www.barringtonarmshotel.com)

# Billy Shears Barber Shop



38 High Street, Shrivenham SN6 3AA  
Tel: 01793 784301

## THINKING OF LETTING YOUR PROPERTY?

### LANDLORDS

Thinking of letting  
your home?  
We offer a  
Professional  
and Personal  
Management  
Service.



### TENANTS

We always have a selection of properties to let in all areas.  
For more information, please ring: (01793) 784442



### Minerva Property Management

50 High Street, Shrivenham, Swindon, Wilts, SN6 8AA  
Tel: (01793) 784442 Fax: (01793) 783366  
Email: [mail@minervaproperties.co.uk](mailto:mail@minervaproperties.co.uk)  
Website: [www.minervaproperties.co.uk](http://www.minervaproperties.co.uk)

## A Message from The Fete Chairman

A very warm welcome to the "Famous" 2012 Shrivenham Village Fete. I say famous as we have been featured in the National press, and have people attending from all over Southern England. We take pride in it being a completely free event for all to come and enjoy, and hope it continues for many years to come.

Now I do hope the weather is going to be kind to us after the terrible early months of the summer. As I write this the reports of the Jet Stream moving back to where it should be have created an excitement that summer may actually arrive for August, but whatever the weather, I can assure you that the Fete will take place come rain or shine.

We have reached capacity, and now have an earlier start time and expect a slightly later finish, as there is so much to pack into the afternoon.

This year is going to be something completely different! We have a Wild West Re-enactment taking place so please be ready for a noisy afternoon of fun, sharp shooting, and keep an eye out for the local Sheriff. Of course we have the traditional items such as the Highworth Silver Band, Fun Fair, Magic shows, the Childrens Olympics, Blue Cross Fun Dog Show and the Tug of War. The afternoon concludes with the Grand Raffle with many great prizes that can be won.

The Recreation ground is expected to be jam packed with many stalls, both indoors and out, car boot and some exciting new attractions. There will be 2 beer tents and a "food village" where various refreshments will be available. We also welcome the Hyperbolics band who will be entertaining us with a wide repertoire covering some of the best music from the last four decades.

I would like to take this opportunity to thank the Parish Council and the Viscountess Barrington's Trust for the use of the Hall and the Recreation Ground. Also, last but not least, many thanks to the members of the Fete Committee and to the helpers on the day that lend a hand and help make it happen.

If you would like to help out in the future or have any ideas for your Village Fete please do contact me either by phone or email, I would be delighted to hear from you.  
**Once again – have a fantastic day**

*Simon Howell*

### Simon Howell

Chair, Shrivenham Village Fete Committee; Tel 784491;  
[www.shrivenham.org/community/village\\_fete](http://www.shrivenham.org/community/village_fete)



# On The Day

## Eating out @ The Fete Food Village

- ◆ Burgers from The Scouts
- ◆ Indian Food by the Gulshan Brasserie
- ◆ The Cotswold Celebration Company
- ◆ Tapas & Wraps by The Real Olive Company
- ◆ Freshly made coffee from Carpuccino
- ◆ Ice Creams
- ◆ Two bars serving real ale
- ◆ Cream Teas by Friends of Shrivenham School

Find out more on our Facebook page:  
[www.facebook.com/ShrivenhamVillageFete](http://www.facebook.com/ShrivenhamVillageFete)



## I.V.Florist

58a High street , Shrivenham ,Nr Swindon  
**Telephone : 01793 782022**      **Fax : 01793 783012**  
E-Mail [i.v.florist@hotmail.com](mailto:i.v.florist@hotmail.com)



- ◆ ***Your local florist***
- ◆ *Fresh Floral Displays*
- ◆ *Wedding Flowers*
- ◆ *Sympathy Tributes*
- ◆ *Specialists in unusual Designs*
- ◆ *Deliver: Local, National & International*



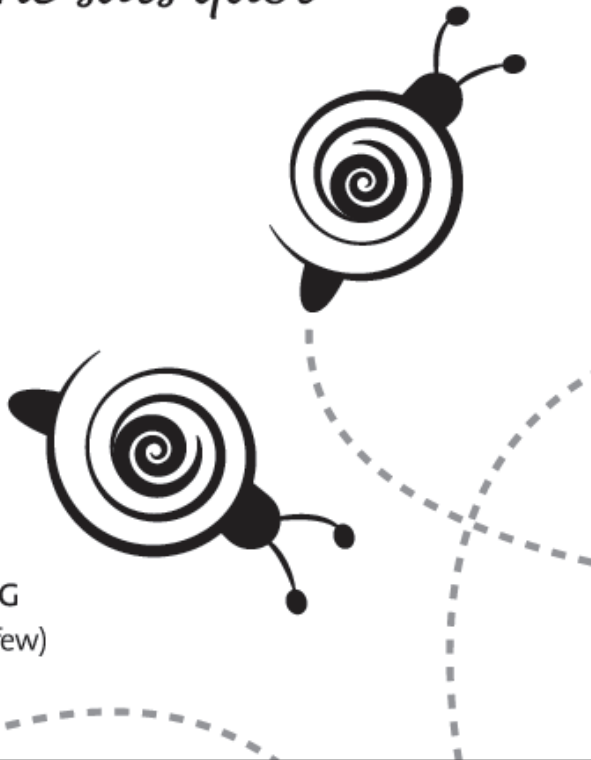
## The Prince of Wales

17<sup>th</sup> Century Village Pub  
**01793 782268**  
~ Live Music ~  
~ Food Available 7 days a week 12 - 3pm & 6 - 9pm ~  
~ Let us fill your taste buds with the creations from our kitchen ~  
~ All produce is locally sourced where possible ~  
~ All food freshly cooked to order for your enjoyment ~  
~ Quiz Night every Tuesday @ 9pm ~  
~ Excellent Real Ales ~  
~ Open Wifi Zone ~  
The Prince of Wales, 16 The High Street, Shrivenham SN6 8AF  
[www.powshrivenham.com](http://www.powshrivenham.com)

# Le Petit Toyshop

Exceptional, quality children's toys,  
games & puzzles with a certain  
*je ne sais quoi*

- DJECO
- PAPO
- MUDPUPPY
- HAPPY HORSE
- JANOD
- SEVI
- SIKU
- EEBOO
- HEXBUG
- MELISSA & DOUG
- ... (to name just a few)



*A friendly service from Sarah & her team*

[www.lepetittoyshop.co.uk](http://www.lepetittoyshop.co.uk)

Also available at Shrivenham Post Office • 01793 782 260

## Programme

---

1.00pm	Highworth Silver Band
1.30pm	Wyoming Raiders
2.00pm	Highworth Silver Band
2.30pm	Hyperbolics
3.15pm	Wyoming Raiders
3.45pm	Mad Pete Magic Show
4.15pm	Children's Races
4.45pm	Tug o' War
5.15pm	Grand Raffle Draw
7.00pm	Shrivenham Circular Walk

...plus fun fair, dog show, stalls, pony rides and many other attractions, in and around the Recreation Ground, that will be announced by tannoy on the day. Timings may be subject to change, so please listen to all announcements.

The Fete Committee accept no responsibility for any loss, damage or injury to anyone attending the Fete, or to their property. Cars are parked at owners risk.

### ACKNOWLEDGEMENTS

The Committee would like to thank all the Blue Cross show judges for their time, the local businesses who have given so generously to the raffle, the Memorial Hall Trustees for their continued support and the volunteers from St John Ambulance for standing by, working hard while we all have fun.







As part of the year 2000's celebrations, the Fete Committee constructed a circular walk around the village. Joining up many existing footpaths, this attractive family walk has been clearly signposted using the 'S logo' found at the bottom of this page.

On 25th August - Fete Day the 13th Annual Circular Walk will start at 7.00pm. If you would like to attend, the walk sets off from the Martens Road Car Park and ends up at the Memorial Hall.

Everyone is welcome to join in - don't forget to bring a torch. If you would like details of the route, there are leaflets available in the Hardware Shop and on the day of the Fete.

**We'll hope to see you there!**



# DEACONS

*for* **DIAMONDS**



- ◆ Same day ring sizing on all new purchases bought at our Swindon premises

## **DEACON & SON (SWINDON) LTD**

**ESTABLISHED 1848**

**11 - 15 Wood Street, Old Town,  
Swindon SN1 4AN**

**Tel: 01793 522072/527530**

**18 Market Place, Faringdon SN7 7HP**

**Tel: 01367 241114**

**[www.deacons-jewellers.com](http://www.deacons-jewellers.com)**

*Items featured subject to stock availability*

## The 'good old days'

*- before computers, colour television,  
central heating and street lighting.*

If you have memories of what life in the village was like before the internet, the Shrivenham Heritage Centre would be interested to share them with you.

Alternatively, if you are interested in seeing the wealth of old photographs, maps, artifacts, records etc. that we currently hold on behalf of the village, why not pay us a visit on Fete Day? You could even join us and participate in our activities.

## ... or were they?

RESEARCH • PRESERVE • DISPLAY

# Fun Dog Show

**SATURDAY 25 AUGUST**

**Entry Fee £2 per dog / per class**

**First class starts at 1.30pm**

**Rosettes awarded for 1st to 5th place.**

**1.30 Best puppy (6-18 months old)**

**2.00 Best veteran (7 years +)**

**2.30 Prettiest bitch**

**3.00 Most handsome dog**

**3.30 The tail that wags the most**

**4.00 Best rescue dog**

**4.30 Best in show (*free class for all winners of previous classes*)**



**Conditions of entry:**

Dogs must be kept on a lead and properly under control at all times. Puppies under 6 months are not eligible. Dogs must not have been in contact with any contagious diseases. The organisers will not be responsible for any accident, or incident involving spectators, competitors, their animals or property. Times given are for guidance only. The judge's decisions are final.

Our Burford rehoming centre is open from 11am to 3.45pm (*closed all day Thursday*). Telephone: 0300 777 1460, or visit the website at [www.bluecross.org.uk](http://www.bluecross.org.uk).

Blue Cross is a charity registered in England and Wales (224392) and in Scotland (SCO40154).



SHRIVENHAM'S OLDEST ESTABLISHED GARAGE

**MOT's**

**Welding**

**Petrol/Diesel Servicing**

**General Repairs**

**Electronic Diagnostics**



**Shrivenham Garage Service Centre**

(Your Local Specialist)

33 High Street, Shrivenham

Tel: (01793) 784040 Fax: (01793) 782202

All Major Credit Cards



**THE CROWN**

11 HIGH STREET, SHRIVENHAM, SN6 8AN

PHONE. 01793 784584



*Wendy, Brian and Phil welcome you to their family run business.*

*Wendy plays the front of house role with Brian as bar manager and their son Phil is head chef.*

*Their aim is 'to provide real homemade food at an honest price'*

*The menu offers classically British food, using locally sourced produce, like steak and hooky pie (with the pastry top cooked from fresh) to slow roasted Cotswold belly pork with crackling, sweet and sour stir fry vegetables and creamy mash. And you can't forget the old favourites like fish and chips and Cumberland sausages, creamy mash and red onion gravy.*

**Opening times:**

**BREAKFAST, COFFEE, SNACKS AND LUNCHES:**

**Tuesday - Saturday from 11am - 2.30pm**

**EVENING MEALS:**

**6pm - 11pm (last meal order 9.30pm)**

**SUNDAY - 11am to 4pm for Sunday Lunch**

**'THE BARN KINDERGARTEN AND OUT OF SCHOOL CLUB'**  
AT SHRIVENHAM PRIMARY SCHOOL

**'THE MOST FUN FOR MILES AROUND'**



**'The Barn Kindergarten'**

(previously Watchfield Kindergarten)

Open term times

Monday - Friday 9.00 am - 3.00 pm

Catering for children aged 2-4 years.



**'The Barn Out of School Club'**

Open 8.00 am to start of school

And after school from 3 pm - 6 pm

Catering for primary school children

Transport provided for Watchfield School Children

Contact- Miss Jane Oughton (NNEB, Norland Diploma) 1 Manor Close, Shrivenham, Swindon, SN6 8AE

**Tel. 01793 782182**

email – [janeoughton@tiscali.co.uk](mailto:janeoughton@tiscali.co.uk)



# A&R Motor Co

Townsend Road, Shrivenham, Swindon, SN6 8HR



**Car Sales, Service, MOT & Repairs**

**Servicing from £75 inc VAT**

**Service & MOT from £99 inc VAT**

**Michael Allison and Peter Reed**

**01793 783299 [www.armotorco.com](http://www.armotorco.com)**

THERE WILL BE ANOTHER MARVELLOUS

## car boot sale

IN THE RECREATION GROUND  
25th AUGUST 2012

PLOTS MUST BE BOOKED IN ADVANCE

Contact Sally: (01793) 861958 (home only)  
or e-mail: [sallykershaw@shrivehamfencing.co.uk](mailto:sallykershaw@shrivehamfencing.co.uk)

"Book on a first come first served basis"

NO CASH OFFERS WILL BE ADMITTED

PLACES IN POSITION BY 12.30PM

£10 per car

**SOLD OUT**

### SHRIVENHAM FENCING

what our customers thought...



Thank you very much for a prompt  
job. We are delighted with the  
end result. J. Chambers



Very pleased with the work that  
you and your business partner carried  
out, for the promptness with which  
the work was undertaken and the  
quality of the workmanship.

J. Hamilton



They are excellent at what  
they do, they get jobs done  
quickly and to a high standard.  
They are also very friendly  
and helpful, I would highly  
recommend them to anyone.  
J. Clifton

Fencing | Closeboard | Panels | Trellis | Gates | Decking | Pergolas | Pressure Cleaning | Repairs & Re-treating

Tel: 01793 784358 | Mob: 07796 353962

[www.shrivenhamfencing.co.uk](http://www.shrivenhamfencing.co.uk)

# FETE 2012

**Over 70 stalls selling  
all sorts of amazing things**  
(indoors & outdoors)

- \* Handbags
- \* Jewellery
- \* Plants
- \* Clothing
- \* Pottery
- \* Paintings and Prints
- \* Gifts and Home Wares

Get your bike checked over free of  
charge by the Mobile Cycle Medic  
Charity Stalls

## **MEGA Raffle!**

30 Car boot pitches  
.....and much, much more!

**Featuring  
'The Wyoming Raiders'**  
Wild West Re-enactment Group

Also

- Mad Pete - children's entertainer
- Vintage and Classic Cars
- A Fairground with lots of traditional games and rides
- Bouncy Castle
- Tug of War Tournament
- Pony Rides
- Fun Dog Show
- Tours of the Church Tower
- Steam Engine

Find out more on our Facebook page: [www.facebook.com/ShrivenhamVillageFete](http://www.facebook.com/ShrivenhamVillageFete)

